



The
EDUCATION ABROAD
Network
by WorldStrides®

— 2022-2023 —

Let's Talk Funding

WAYS TO PAY FOR STUDY ABROAD

Do you usually get financial aid for school?


QUESTIONS FOR YOUR ADVISOR


Can I use my financial aid for study abroad?

If yes, will all of it apply?

Are there any special forms that need to be completed by either me or my study abroad provider?

Is there any additional funding for study abroad from my university?

 Financial aid funds from your university usually arrive after the start date of your program.

 Once you figure out how much financial aid you'll be getting, use the **Financial Aid Calculation Tool (FACT)** on our website to determine your out-of-pocket costs.

Did you know?


60%


of students use their financial aid to help fund their program abroad with us.


YES

Schedule a meeting with the study abroad office and/or financial aid office at your school to let them know your plan to go abroad.


Work on a budget for your term abroad to see how the costs stack up to your home university. Use p. 3 as a guide.

 Be sure to bring the **questions for your advisor** to your meeting so you'll know what to ask.

 If you usually receive financial aid, you will likely be able to use those funds for study abroad, too.

 Check out the scholarships and grants in this booklet and on our website for ways to help fund your program.

NO

 No problem! We offer a variety of payment options.

Cost comparison worksheet

Use this cost comparison sheet to work on your budget and to see how a term abroad will compare to a term at your home university.

| TERM ABROAD | VS. | TERM AT YOUR HOME INSTITUTION | <p>QUESTIONS?</p> <p>Call us anytime at (512)-480-8522 to speak with one of our helpful advisors!</p> |
|---|-----|---|---|
| <p>Program Price</p> <input style="width: 100%; height: 20px;" type="text"/> | | <p>Tuition</p> <input style="width: 100%; height: 20px;" type="text"/> | |
| <p>Additional Cost of Housing and/or Housing Deposit Most programs include housing in the program price. For the Pacific Region, housing is provided for an additional fee. Housing deposit is refundable.</p> <input style="width: 100%; height: 20px;" type="text"/> | | <p>Fees Things to consider: university fees, athletics, health services, etc.</p> <input style="width: 100%; height: 20px;" type="text"/> | |
| <p>Meals (if applicable) Many programs include meals. In options where meals are not included, reference the Additional Estimated Expenses on the website for approximate budget amounts.</p> <input style="width: 100%; height: 20px;" type="text"/> | | <p>Additional Cost of Housing</p> <input style="width: 100%; height: 20px;" type="text"/> | |
| <p>Airfare*</p> <input style="width: 100%; height: 20px;" type="text"/> | | <p>Meals</p> <input style="width: 100%; height: 20px;" type="text"/> | |
| <p>Passport & Student Visa (if applicable)*</p> <input style="width: 100%; height: 20px;" type="text"/> | | <p>Parking Permit</p> <input style="width: 100%; height: 20px;" type="text"/> | |
| <p>Books*</p> <input style="width: 100%; height: 20px;" type="text"/> | | <p>Gas and/or Bus Pass</p> <input style="width: 100%; height: 20px;" type="text"/> | |
| <p>Personal Expenses* Things to consider: personal travel costs, entertainment, transportation, etc.</p> <input style="width: 100%; height: 20px;" type="text"/> | + | <p>Books</p> <input style="width: 100%; height: 20px;" type="text"/> | |
| <p>Total Program Cost</p> <input style="width: 100%; height: 20px;" type="text"/> | | <p>Personal Expenses* Things to consider: personal travel costs, entertainment, transportation, etc.</p> <input style="width: 100%; height: 20px;" type="text"/> | + |
| <p>Total Financial Aid (if applicable)</p> <input style="width: 100%; height: 20px;" type="text"/> | | <p>Total Home University Cost</p> <input style="width: 100%; height: 20px;" type="text"/> | |
| <p>Estimated Out-Of-Pocket Payment</p> <input style="width: 100%; height: 20px;" type="text"/> | | <p>Total Financial Aid (if applicable)</p> <input style="width: 100%; height: 20px;" type="text"/> | - |
| <p>Estimated Out-Of-Pocket Payment</p> <input style="width: 100%; height: 20px;" type="text"/> | | <p>Estimated Out-Of-Pocket Payment</p> <input style="width: 100%; height: 20px;" type="text"/> | |

*For help estimating these items, go to the [Funding](#) section of our website.

What's included

Wondering what's included in a program with us? It's MUCH more than just tuition...



EXTENSIVE
ADVISING &
SUPPORT



COMPREHENSIVE
HEALTH, SAFETY &
SECURITY SUPPORT



AIRPORT
RECEPTION



VISA SUPPORT



EXCURSIONS



TUITION AT HOST
UNIVERSITY



HOUSING



MEALS*



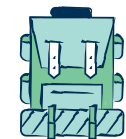
RESIDENT STAFF



ON-SITE
OFFICES



INTERNET ACCESS



CULTURAL
ACTIVITIES



INTERNATIONAL
MEDICAL
INSURANCE



OFFICIAL
TRANSCRIPT FROM
HOST UNIVERSITY



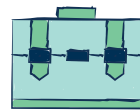
ON-SITE
ORIENTATION



DISCOVERY MODEL



SCHOLARSHIP
OPPORTUNITIES



PROFESSIONAL
DEVELOPMENT
TOOLBOX



While these apply to most programs, inclusions may differ. See the What's Included section on the website for your specific program.

ADDITIONAL EXPENSES

Don't forget to budget for these items! For country-specific expenses, check out the Funding section on our website.



VISAS

Estimated range:
\$120 - \$600



MEALS

Estimated range:
Varies



FLIGHTS

Estimated range:
\$700 - \$2,500



PASSPORT

Estimated:
\$165



PERSONAL
EXPENSES

Estimated range:
\$100 - \$200
per week



BOOKS

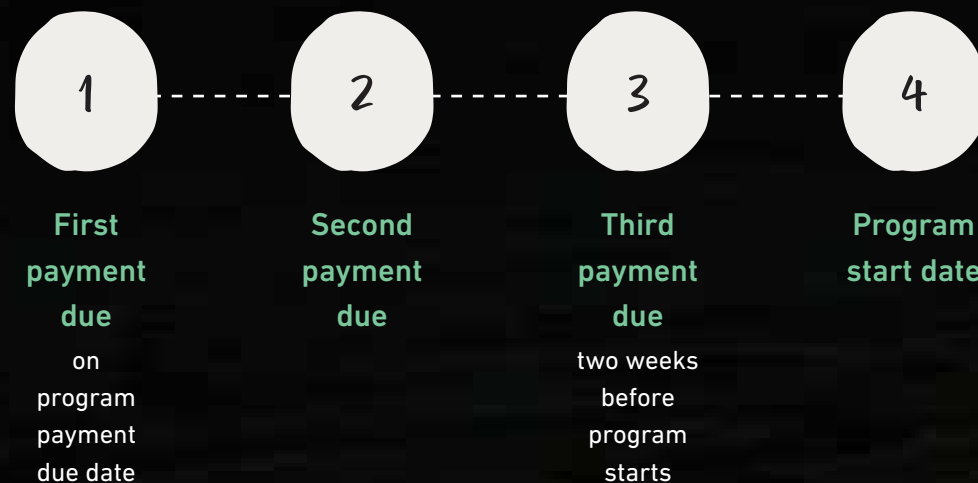
Estimated range:
\$50 - \$400

*Meals are included in some programs, depending on housing and location. Where meals are not included, an estimate for meals is included on Funding section of the website.

Not receiving financial aid? No problem!

PAYMENT PLANS

We offer payment plan options for participants and their families who need more time to make payment arrangements. Please reach out to us to learn more about payment plan options, which generally align to the following timeline:



529 & COLLEGE SAVINGS FUNDS

We accept any funds that are applicable to study abroad programs. Check with your 529/college savings provider to ask about using these funds toward your program.

ISA & TEAN GRANTS & SCHOLARSHIPS

There are numerous scholarships and grants available through us and our host university partners, whether you have financial need or not. Check out the details on p. 6.

HOME UNIVERSITY GRANTS & SCHOLARSHIPS

Many U.S. universities have scholarships and grants available. Be sure to check with the Study Abroad and/or Financial Aid office at your home university to see if they have additional funding available for programs abroad.

PARTNER SCHOLARSHIPS

The Fund for Education Abroad's (FEA) mission is to provide scholarships and ongoing support to students who are underrepresented among the U.S. study abroad population. As an FEA Access Partner, FEA scholarship applicants participating on an ISA or TEAN program may be eligible for financial support of up to \$5,000.

FUNDRAISING

Students often ask how they can get started with fundraising. We encourage students to get creative! Use social media to your benefit and get the word out about your fundraising efforts. Getting started as early as possible is always a great idea. Have a plan in mind, stay positive, and check out the Fundraising Guide on p. 7.

Are you looking for additional funding?

TEAN and ISA offer generous scholarships to help make study abroad a reality.

| Scholarship Type | Terms Awarded |
|---|-------------------------|
| Semester Partnership Scholarship | Semester |
| Diversity Scholarship | Semester and Summer |
| Summer Pathways Scholarship | Summer |
| Community Engagement Scholarship | Summer Service-Learning |
| Host University Scholarship | Varies by location |
| GO (Global Opportunity) Full-Ride Scholarship | Semester |

Freeman-Asia Supplemental Scholarship

TEAN awards this \$500 supplemental scholarship to recipients who are participating in a TEAN semester program in China, Japan, Singapore, South Korea, Thailand, or Vietnam. The Freeman-ASIA Scholarship is designed to support U.S. undergraduates with demonstrated financial need who are planning to study overseas in Asia. Submission of your Freeman-ASIA Scholarship award letter is required to receive this award.

Affiliate Partnership Awards \$200 to \$5,000

We provide special funding to over 500 of our university partners!

GIVE (GI Veterans Excellence) Scholarship 5%

We award a 5% supplemental scholarship to GI-Bill recipients. This award will apply to all recipients, regardless of whether the GI-Bill funding will transfer to their term abroad.

Repeat Student & Alumni Grants \$350 to \$600

For returning students who have traveled with us before.

Sibling Grants \$350 to \$500

Did your sibling participate in a program with us? If so, you qualify for this grant—and you owe your sibling a thank you!

SCHOLARSHIP DEADLINES

Don't forget! Mark your calendar and submit your application by the following dates:

February



Summer

April



Fall

October



Winter/Spring

QUESTIONS?

Email

HigherEdFinAid@worldstrides.org



Check out the [scholarships](#) section on our website for additional eligibility details and application instructions.

Fundraising guide to study abroad

Fundraising is a great way to raise money for your education abroad program. We encourage students to get creative and put the “fun” in fundraising!

HOMETOWN RESOURCES

When asking businesses for funds, focus locally. Start with the Chamber of Commerce, who might be able to provide contact information for nearby businesses. Consider reaching out to your local Rotary or other clubs who might be willing to sponsor you.

TUTORING

Students are always in need of tutoring! The hours are flexible and you can set your own rates. If you excel in a particular subject, consider offering your services.



CROWDFUNDING

Various websites such as gofundme.com are great platforms where your social media connections can easily contribute to your fund.

BIRTHDAYS & HOLIDAYS

Ask for contributions to your study abroad fund instead of presents this year.



NETWORK

Reach out to your school, youth group, manager at a part-time job, local companies, or your parents' friends—anyone who might be willing to contribute to your cause. You never know what people will say unless you ask!

GET ACTIVE

Commit to running a marathon, biking a certain distance, or participating in some sort of race or event. Ask friends and family to make a pledge.

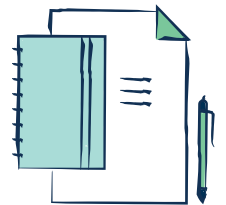


START A SHOP

Have a skill or interest you can market and sell? Think Etsy, Facebook marketplace, or a local farmer's market. Use your skills to help fund your program abroad.

FREELANCING

Love to write? Freelancing is a great opportunity for aspiring writers to stretch their skills and earn extra cash. Many companies need gifted writers, and freelance websites can be a great place to make those connections.



FREQUENT FLYER MILES

Ask friends, family, or your neighbors to donate their frequent flyer miles to you. If you have enough people pledge their miles, you can purchase your plane ticket for little to no cost.



The
EDUCATION ABROAD
Network
by WorldStrides®



HIGHEREDFINAID@WORLDSTRIDES.ORG
TEANABROAD.ORG | STUDIESABROAD.COM